



PATH LIGHTS PL-07-XSM SERIES

TYPE

SPECIFICATIONS

CONSTRUCTION: 0.75" diameter extruded copper post with matching 0.90" diameter copper cap

LENS: Frosted high-impact acrylic

LAMP SUPPLIED: T9 10w Xenon bi-pin; 10,000 hours average rating (10w max)

LAMP OPTIONS: None

SOCKET: Bi-pin G4 base with 200°C silicone lead wires

WIRING: Black 3 foot 18/2 zip cord from base of fixture (12v only)

For 25 foot 16/2 fixture lead wire add -25F to catalog number.

CONNECTION: FA-05 Quick Connector (not supplied) from fixture to main cable (12/2, 10/2 or 8/2 only)

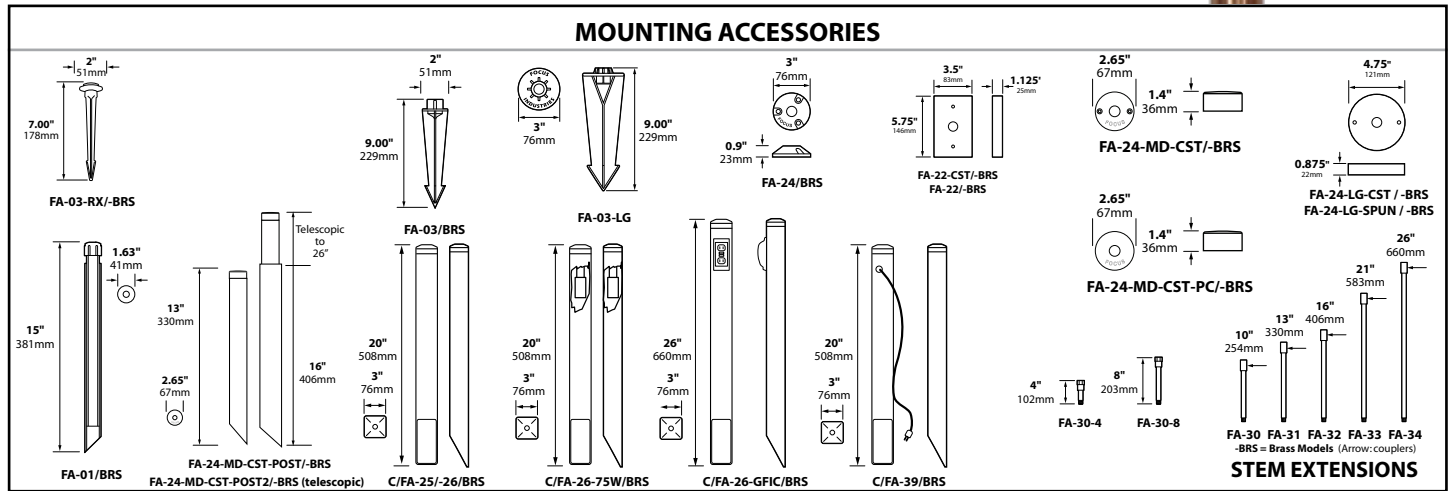
MOUNTING: Angle cut post

Deck Mount version (-DM) available with FA-03 black 9" ABS stake, tapped 1/2" NPS

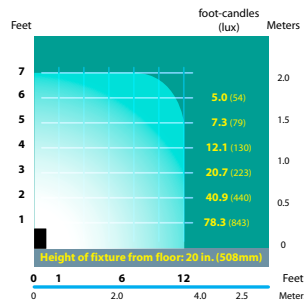
FINISH: Unfinished copper. Optional finishes available

ORDERING INFORMATION

CATALOG NO.	DESCRIPTION	LAMP	SHIP WEIGHT
PL-07-XSM-COP	Copper X-Small Bollard	10w Xenon	2.0 lbs.
PL-07-XSM-DM-COP	Copper X-Small Bollard, Deck Mount	10w Xenon	2.0 lbs.



LIGHT DISTRIBUTIONS AND PHOTOMETRICS



PL-07

Half Spread Photometrics

JOB INFORMATION

Type: _____ Date: _____

Job Name: _____

Cat. No.: _____

Lamp(s): _____

Specifier: _____

Contractor: _____

Notes: _____

FOCUS INDUSTRIES INC.
25301 COMMERCENTRE DRIVE
LAKE FOREST, CA 92630

www.focusindustries.com
sales@focusindustries.com
(949) 830-1350 • FAX (949) 830-3390

Black Texture (Standard)	Antique Verde	Bronze Texture	Camel	White Texture	Hunter Texture	Rust	Weathered Iron	Weathered Brown	Stucco	Rubbed Verde	Chrome Powder	Terra Cotta	Acid Rust	Acid Verde	Black Acid Treatment
-BLT	-ATV	-BRT	-CAM	-WTX	-HTX	-RST	-WIR	-WBR	-STU	-RBV	-CPR	-TRC	-BAR/CAR	-BAV/CAV	-BAT